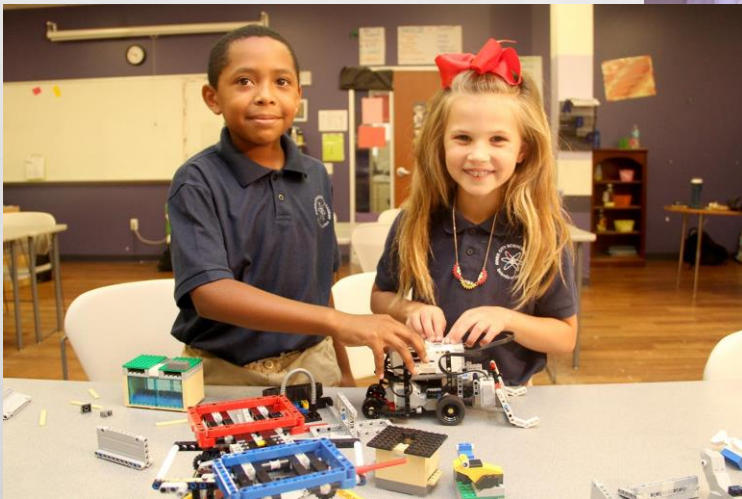


RCSA ELEMENTARY SCHOOL TOUR



ENROLLMENT/RE-ENROLLMENT



ONCE A STUDENT IS ENROLLED AT RCSA, HE/SHE ONLY NEEDS TO RE-ENROLL EACH YEAR TO BE GUARANTEED A SPOT THROUGH GRADUATION.

IF RE-ENROLLMENT DEADLINES ARE MISSED, THE SEAT IS FORFEITED.

OPEN ENROLLMENT BEGINS DECEMBER 1ST.

LOTTERY WILL BE HELD MARCH 1ST.

IMPORTANT UPCOMING DATES

LOTTERY - MARCH 1ST

LOTTERY NOTIFICATIONS - AFTER MARCH 5TH

ENROLLMENT PACKETS WILL BE EMAILED FROM MARCH 15TH – 19TH, AND ARE DUE ON MARCH 26TH WITH PAYMENT.

VIRTUAL PARENT INFORMATION MEETINGS (REQUIRED FOR NEW STUDENTS)

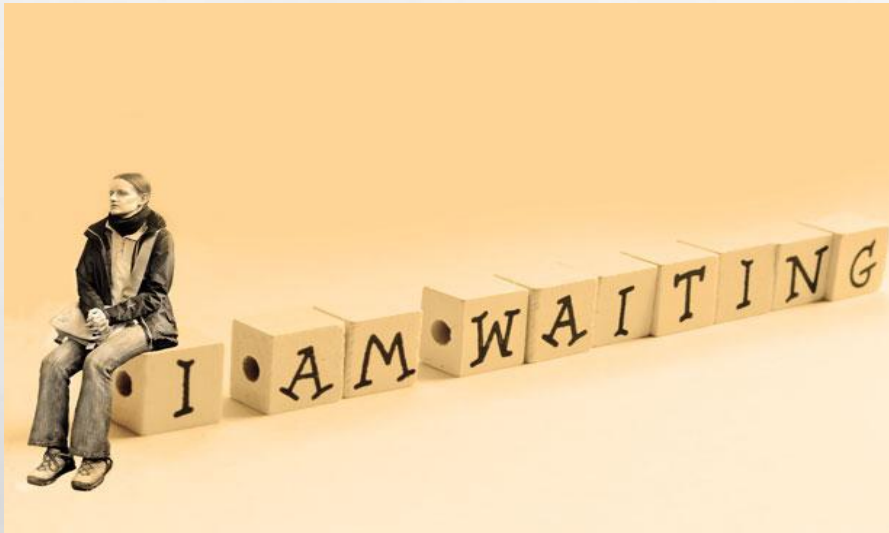
WEDNESDAY, APRIL 14TH @ 3:30 PM

SATURDAY, APRIL 17TH @ 9 AM

WEDNESDAY, APRIL 21ST @ 3:30 PM



WHAT NOW?



BE CHECKING YOUR EMAIL!

**FOLLOW-UP WITH MS. MCKENDRICK AT
JMCKENDRICK@RIVERCITYSCIENCE.ORG.**

SCHOOL CALENDAR/SCHEDULES



Duval County Public Schools
2020-2021
District Calendar

JULY					AUGUST					SEPTEMBER				
M	T	W	T	F	M	T	W	T	F	M	T	W	T	F
		1	2	3	3	4	5	6	7		1	2	3	4
6	7	8	9	10	10	11	12	13	14	7	8	9	10	11
13	14	15	16	17	17	18	19	20	21	14	15	16	17	18
20	21	22	23	24	24	25	26	27	28	21	22	23	24	25
27	28	29	30	31	31					28	29	30		
OCTOBER					NOVEMBER					DECEMBER				
M	T	W	T	F	M	T	W	T	F	M	T	W	T	F
			1	2	2	3	4	5	6		1	2	3	4
5	6	7	8	9	9	10	11	12	13	7	8	9	10	11
12	13	14	15~	16	16	17	18	19	20	14	15	16	17	18~
19	20	21	22	23	23	24	25	26	27	21	22	23	24	25
26	27	28	29	30	30					28	29	30	31	
JANUARY					FEBRUARY					MARCH				
M	T	W	T	F	M	T	W	T	F	M	T	W	T	F
				1	1	2	3	4	5	1	2	3	4	5
4	5	6	7	8	8	9	10	11	12	8	9	10	11	12
11	12	13	14	15	15	16	17	18	19	15	16	17	18	19~
18	19	20	21	22	22	23	24	25	26	22	23	24	25	26
25	26	27	28	29						29	30	31		
APRIL					MAY					JUNE				
M	T	W	T	F	M	T	W	T	F	M	T	W	T	F
			1	2	3	4	5	6	7		1	2	3~	4
5	6	7	8	9	10	11	12	13	14	7	8	9	10	11
12	13	14	15	16	17	18	19	20	21	14	15	16	17	18
19	20	21	22	23	24	25	26	27	28	21	22	23	24	25
26	27	28	29	30	31					28	29	30		

Legend:

25* Early Dismissal
15~ End of Grading Period

7 First & Last Day of School
1 Employee Planning/Inservice

17 Schools Closed
25 Schools/Admin Offices Closed

Weather

Board Approved 08/19/2020

RCSA ELEMENTARY FOLLOWS THE DCPS SCHOOL CALENDAR.

SCHOOL HOURS: 7:40 AM – 2:45 PM

ARRIVAL...

***CLASS BEGINS AT 8:00 AM SHARP.**

PARENTS MUST REMAIN IN THEIR CARS AND DROP OFF IN FRONT OF THE GYM. SAFETY PATROLS WILL ASSIST STUDENTS INTO THE BUILDING.

AFTER 8:00, STUDENTS MUST BE DROPPED OFF FROM THE CARLOOP IN FRONT OF THE MAIN OFFICE BY A PARENT AND RECEIVE A TARDY SLIP.

DISMISSAL...

STUDENTS ARE PICKED UP FROM THE GYM. ALL PARENTS MUST REMAIN IN THEIR VEHICLES HAVE A VISIBLE RCSAES CAR TAG.

ANY STUDENT NOT PICKED UP BY 3:00 PM IS CHECKED INTO EXTENDED DAY, AND AN AUTHORIZED ADULT MUST SIGN THE CHILD OUT IN THE FRONT OFFICE, PAYING THE DAILY RATE OF \$15.

CLASS SIZE & STRUCTURE



K-2:

AVERAGE 18 STUDENTS; SELF-CONTAINED

3-5:

**AVERAGE 20-24 STUDENTS;
ROTATE THROUGH SEPARATE
TEACHERS FOR ELA/SS, MATH, AND
SCIENCE**

**GRADES 3-5 ADHERE TO FLORIDA
STATE ASSESSMENTS.**

TESTING



RCSA ELEMENTARY IS REQUIRED TO PARTICIPATE IN ALL STATE-WIDE TESTING (FSA, FCAT, WIDA)

I-READY TESTING IS ADMINISTERED THROUGHOUT THE YEAR, AND DIAGNOSTIC ASSESSMENTS ARE REPORTED TO THE DISTRICT.

RESOURCES



PE

ART

STEM OR TECHNOLOGY

**CHARACTER EDUCATION/MEDIA
CENTER**

SKILLS/ENRICHMENT

GIFTED & ESE SERVICES



GIFTED EDUCATION IS OFFERED THROUGH AN ON-SITE PROGRAM WITH GIFTED ENDORSED TEACHERS.

ESE SERVICES ARE PROVIDED FOR STUDENTS WITH IEP'S/504'S THROUGH AN ESE CERTIFIED TEACHER.

IEP'S AND 504'S ARE REQUESTED WITH APPLICATIONS TO ENSURE THAT ACCOMMODATIONS CAN BE MET.

CURRICULUM

ELA: HOUGHTON MIFFLIN JOURNEYS (THINKCENTRAL) IN CONJUNCTION WITH I-READY AND ACCELERATED READER

****45 MINUTES OF I-READY IS REQUIRED TO BE COMPLETED AT HOME EACH WEEK BY THE STUDENT.***

MATH: MCGRAW-HILL EVERYDAY MATHEMATICS IN CONJUNCTION WITH I-READY

****45 MINUTES OF I-READY IS REQUIRED TO BE COMPLETED AT HOME EACH WEEK BY THE STUDENT.***

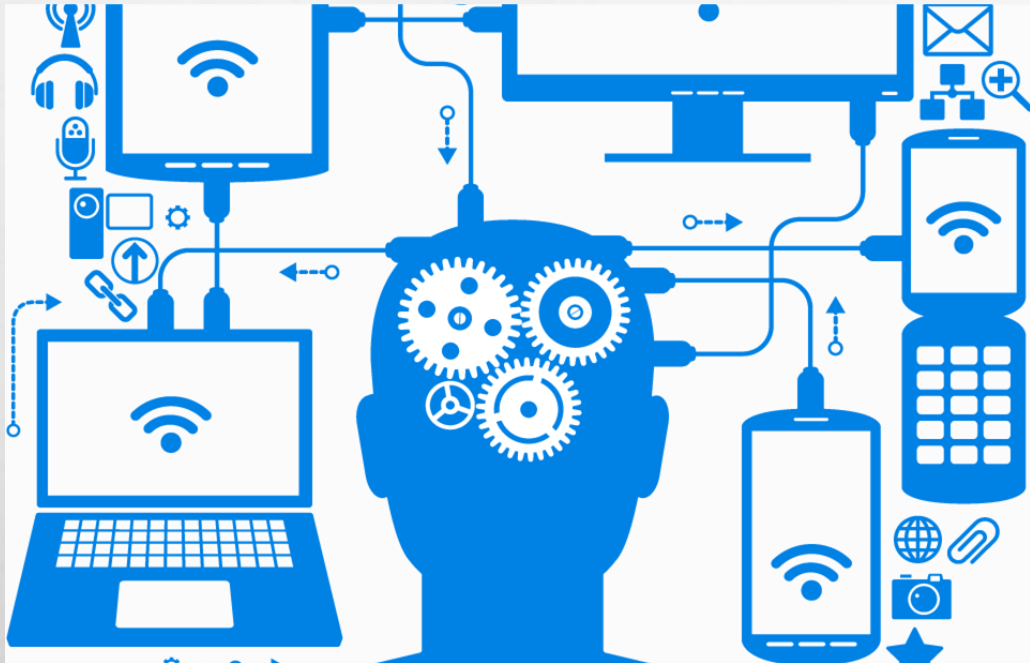
SCIENCE: NATIONAL GEOGRAPHIC AND SCIENCE WEEKLY

SOCIAL STUDIES: STUDIES WEEKLY

******MANY OF RCSA'S CURRICULUM RESOURCES INVOLVE TECHNOLOGY AT SCHOOL AND AT HOME. COMPUTER AND INTERNET ACCESS ARE REQUIRED.***



LET'S TALK TECHNOLOGY



CLASS DOJO: WWW.CLASSDOJO.COM

RCSA CONNECT:
[HTTPS://RCSACONNECT.RCSAELEMENTARY.ORG/](https://RCSACONNECT.RCSAELEMENTARY.ORG/)

I-READY: [HTTPS://LOGIN.I-READY.COM/](https://LOGIN.I-READY.COM/)

ACCELERATED READER:
[HTTPS://HOSTED340.RENLEARN.COM/6224299/](https://HOSTED340.RENLEARN.COM/6224299/)

STUDY ISLAND: [HTTP://WWW.STUDYISLAND.COM/](http://WWW.STUDYISLAND.COM/)

STUDIES WEEKLY: [HTTPS://WWW.STUDIESWEEKLY.COM/](https://WWW.STUDIESWEEKLY.COM/)

THINKCENTRAL: [HTTPS://WWW-K6.THINKCENTRAL.COM](https://WWW-K6.THINKCENTRAL.COM)

AFTER-SCHOOL TUTORING



AFTER-SCHOOL TUTORING IS 45 MINUTES ONCE A WEEK FOR GRADES K-2 AND IS OFFERED BY STUDENTS' HOMEROOM TEACHERS.

AFTER-SCHOOL TUTORING IS 45 MINUTES 2-3 TIMES PER WEEK FOR GRADES 3-5 AND IS OFFERED BY THE SUBJECT-AREA TEACHERS.

WHAT HOMEWORK LOOKS LIKE....

SUN	MON	TUES	WED	THURS	FRI	SAT
	i-Ready Rdg (9 min) i-Ready Math (9 min) AR Reading (20 min) Sight/Spell/V ocab/Fluenc y Practice (10 min) Math HW (10 min) Study Island/Studie s Weekly (10 min) Total: 1 hr 8 min	i-Ready Rdg (9 min) i-Ready Math (9 min) AR Reading (20 min) Sight/Spell/V ocab/Fluenc y Practice (10 min) Math HW (10 min) Study Island/Studie s Weekly (10 min) Total: 1 hr 8 min	i-Ready Rdg (9 min) i-Ready Math (9 min) AR Reading (20 min) Sight/Spell/V ocab/Fluenc y Practice (10 min) Math HW (10 min) Study Island/Studie s Weekly (10 min) Total: 1 hr 8 min	i-Ready Rdg (9 min) i-Ready Math (9 min) AR Reading (20 min) Sight/Spell/V ocab/Fluenc y Practice (10 min) Math HW (10 min) Study Island/Studie s Weekly (10 min) Total: 1 hr 8 min	i-Ready Rdg (9 min) i-Ready Math (9 min) AR Reading (20 min) Sight/Spell/V ocab/Fluenc y Practice (10 min) Math HW (10 min) Study Island/Studie s Weekly (10 min) Total: 1 hr 8 min	*Quarterly Projects in Rdg, Math, and Science

HOMework EXPECTATIONS: KINDERGARTEN



Kindergarten

- ☐ **WEEKLY I-READY – 90 MINUTES (45 MATH/45 READING)**
- ☐ **ACCELERATED READER – STUDENTS MUST MEET QUARTERLY GOALS.**
- ☐ **MATH HOME LINKS (MUST BE PRINTED AT HOME.)**
- ☐ **SIGHT WORDS PRACTICE**
- ☐ **FLUENCY PRACTICE**
- ☐ **QUARTERLY AT-HOME PROJECTS**

HOMEWORK EXPECTATIONS:

1ST GRADE



- ☐ **WEEKLY I-READY – 90 MINUTES (45 MATH/45 READING)**
- ☐ **ACCELERATED READER – STUDENTS MUST MEET QUARTERLY GOALS.**
- ☐ **FLUENCY PRACTICE**
- ☐ **SPELLING/SIGHT WORDS PRACTICE**
- ☐ **MATH HOME LINKS (MUST BE PRINTED AT HOME.)**
- ☐ **QUARTERLY PROJECT (PRESENTED IN CLASS)**

HOMEWORK EXPECTATIONS:

2ND GRADE



- ☐ **WEEKLY I-READY – 90 MINUTES (45 MATH/45 READING)**
- ☐ **ACCELERATED READER – STUDENTS MUST MEET QUARTERLY GOALS.**
- ☐ **FLUENCY PRACTICE**
- ☐ **WEEKLY BOOK REPORT**
- ☐ **MATH HOME LINKS (MUST BE PRINTED AT HOME.)**
- ☐ **STUDY ISLAND**
- ☐ **THEMED QUARTERLY PROJECT (PRESENTED IN CLASS)**

HOMEWORK EXPECTATIONS:

3RD GRADE



- ☐ **WEEKLY I-READY – 90 MINUTES
(45 MATH/45 READING)**
- ☐ **ACCELERATED READER –
STUDENTS MUST MEET
QUARTERLY GOALS & READ A
VARIETY OF FICTION AS WELL AS
NONFICTION.**
- ☐ **VOCABULARY**
- ☐ **MATH HOME LINKS**
- ☐ **STUDIES WEEKLY**
- ☐ **STUDY ISLAND**
- ☐ **QUARTERLY PROJECTS
(PRESENTED IN CLASS)**

HOMework EXPECTATIONS:

4TH GRADE



fourth
GRADE

- ☐ **WEEKLY I-READY – 90 MINUTES (45 MATH/45 READING)**
- ☐ **ACCELERATED READER – STUDENTS MUST MEET QUARTERLY GOALS & READ A VARIETY OF FICTION AS WELL AS NONFICTION.**
- ☐ **READING LOGS – 20 MINUTES/NIGHT**
- ☐ **WEEKLY FLUENCY ACTIVITY**
- ☐ **STUDIES WEEKLY**
- ☐ **SCIENCE WEEKLY**
- ☐ **STUDY ISLAND**
- ☐ **MATH HOME LINKS (MUST BE PRINTED AT HOME.)**
- ☐ **QUARTERLY PROJECT IN EVERY SUBJECT AREA**

HOMework EXPECTATIONS: 5TH GRADE



- ☐ **WEEKLY I-READY – 90 MINUTES
(45 MATH/45 READING)**
- ☐ **ACCELERATED READER – STUDENTS
MUST MEET QUARTERLY GOALS & READ A
VARIETY OF FICTION AS WELL AS NONFICTION.**
- ☐ **WEEKLY READING
COMPREHENSION ACTIVITY**
- ☐ **STUDIES WEEKLY**
- ☐ **SCIENCE WEEKLY**
- ☐ **STUDY ISLAND**
- ☐ **MATH HOMEWORK ACTIVITY
PACKET**
- ☐ **QUARTERLY PROJECT IN EVERY
SUBJECT AREA**

FOSTERING INDEPENDENCE



RCSA Elementary is an */Can* school. We want students to know their abilities and potential, and to take accountability for their learning.

Our emphasis is on INDEPENDENCE. We utilize standards-based teaching/learning, and students' grades reflect their mastery of standards.

CODE OF CONDUCT

RCSA ELEMENTARY FOLLOWS A STRICT CODE OF CONDUCT. CLASSDOJO IS UTILIZED AS OUR SCHOOL-WIDE DISCIPLINE/PARENT CONTACT SYSTEM AND IT IS MANDATORY THAT PARENTS BE CONNECTED.

K-5 STUDENTS RECEIVE DISCIPLINE CONSEQUENCES, WHICH MAY INCLUDE: LUNCH/RECESS DETENTIONS, AFTER SCHOOL DETENTIONS, AND OUT OF SCHOOL SUSPENSIONS.

PARENTS ARE ABLE TO TRACK THEIR CHILD'S CONDUCT LOG AND DISCIPLINARY ACTIONS ON RCSA CONNECT/FOCUS. DETAILED INFORMATION REGARDING OUR CODE OF CONDUCT CAN BE FOUND IN THE RCSAES HANDBOOK THAT IS FOUND IN THE FRONT OF YOUR CHILD'S AGENDA OR ON OUR WEBSITE.



UNIFORMS

POLO SHIRTS WITH SCHOOL LOGO, KHAKI OR NAVY BLUE BOTTOMS, AND ATHLETIC SHOES ARE REQUIRED.

LONG-SLEEVE SHIRTS AND TIGHTS MAY BE WORN UNDERNEATH UNIFORMS IF THEY ARE SOLID BLUE, RED, BLACK, WHITE, OR GREY.

RCSA SCHOOL JACKETS ARE THE ONLY JACKETS TO BE WORN INSIDE THE BUILDING.

UNIFORMS MAY BE PURCHASED IN THE FRONT OFFICE.



GUARDIAN PROGRAM



THE COACH AARON FEIS GUARDIAN PROGRAM WAS ESTABLISHED IN 2018 THROUGH THE MARJORY STONEMAN DOUGLAS HIGH SCHOOL PUBLIC SAFETY ACT. IN ITS INITIAL REPORT, THE MARJORY STONEMAN DOUGLAS PUBLIC SAFETY COMMISSION FOUND THAT HAVING GUARDIANS IN SCHOOLS IS THE BEST WAY TO ENSURE HIGHLY TRAINED PERSONNEL ARE IN PLACE TO RESPOND IMMEDIATELY IN THE EVENT OF A SCHOOL SHOOTING.

GUARDIANS ARE ARMED PERSONNEL WHO AID IN THE PREVENTION OR ABATEMENT OF ACTIVE ASSAILANT INCIDENTS ON SCHOOL PREMISES. THEY ARE EITHER SCHOOL EMPLOYEES WHO VOLUNTEER TO SERVE IN ADDITION TO OFFICIAL JOB DUTIES OR PERSONNEL HIRED FOR THE SPECIFIC PURPOSE OF SERVING AS A SCHOOL GUARDIAN. GUARDIANS MUST PASS PSYCHOLOGICAL AND DRUG SCREENINGS, AND SUCCESSFULLY COMPLETE A MINIMUM OF 144 HOURS OF TRAINING.

SCHOOL COUNSELING

RCSAES DOES HAVE A SCHOOL COUNSELOR.

***THE SCHOOL COUNSELOR IS NOT A LONG TERM COUNSELOR.**

WHAT IS HER ROLE?

- DELIVERS CURRICULUM TEACHING SOCIAL SKILLS AND STRATEGIES**
- ASSISTS WITH SOCIAL CONFLICTS - INDIVIDUAL AND GROUP**
- TEACHES CHILD SAFETY MATTERS**
- MAKES REFERRALS FOR OUTSIDE COUNSELING**



SCHOOL BREAKFAST & LUNCH



PROVIDED BY SLA (CURRENT PRICES: \$2.00 FOR BREAKFAST; \$3.50 FOR LUNCH).

STUDENTS MAY BRING THEIR OWN LUNCH.

STUDENTS MAY APPLY FOR FREE AND REDUCED THROUGH RCSA.

All payments must be made online through SLA.

BEFORE AND AFTER SCHOOL CARE



BEFORE CARE IS AVAILABLE IN THE MORNING AND STARTS AT 6:45 AM.

CURRENT BEFORE SCHOOL FEES: \$125/MONTH

AFTER CARE BEGINS DIRECTLY AFTER SCHOOL AND ENDS AT 6:00 PM.

CURRENT AFTER SCHOOL FEES: \$175/MONTH

CURRENT BEFORE & AFTER SCHOOL FEES: \$250/MONTH

SIBLING DISCOUNTS ARE AVAILABLE.

***All payments must be made online through School Pay.**

EXTENDED DAY ACTIVITIES:

COMPUTER TIME (I-READY, ACCELERATED READER, STUDY ISLAND, ETC.)

CENTERS (GAMES, PUZZLES, CHALLENGES, ETC.)

DINNER PROGRAM

RECESS/OUTSIDE TIME

VOLUNTEERS



**ANY VOLUNTEER THAT SPENDS
TIME WITH STUDENTS MUST
COMPLETE A DUVAL COUNTY
VOLUNTEER APPLICATION AND
RECEIVE CLEARANCE, USING THE
BELOW LINK:**

[HTTPS://DCPS.DUVALSCHOOLS.ORG/VOLUNTEER](https://dcps.duvalschools.org/Volunteer)

PARENT COMMUNICATION



RCSA CONNECT

CLASSROOM DOJO

CONSTANT CONTACT NEWSLETTERS

*** IF YOU ARE NOT CURRENTLY RECEIVING CONSTANT CONTACT NEWSLETTERS, PLEASE EMAIL MRS. HOUGH AT [JHOUGH@RIVERCITYSCIENCE.ORG](mailto:jhoUGH@RIVERCITYSCIENCE.ORG) WITH YOUR MOST UPDATED EMAIL ADDRESS.**

REMIND APP

FACEBOOK

SCHOOL MESSENGER

FRIDAY FOLDERS

WHAT SHOULD MY CHILD BE DOING OVER THE SUMMER?



ALL STUDENTS ARE REQUIRED TO COMPLETE SUMMER READING AND MATH PROJECTS. THESE ARE SUBMITTED FOR A QUARTER 1 GRADE IN AUGUST.

**THEY CAN BE ACCESSED THROUGH
THE RCSA ROCKET READER
NEWSLETTERS.**

KINDERGARTEN SCREENINGS



ALL KINDERGARTEN STUDENTS MUST BE SCREENED OVER THE SUMMER. STUDENTS ARE NOT PLACED IN A HOMEROOM CLASS WITHOUT COMPLETING A SCREENER.

THE SCREENING IS A SIMPLE ASSESSMENT OF THE FOLLOWING:

- IDENTIFICATION OF LETTERS**
- WRITING NAME**
- NUMBERS 1-10**
- BASIC SIGHT WORDS**

QUESTIONS?

ENROLLMENT SPECIALIST: MS. MCKENDRICK
JMCKENDRICK@RIVERCITYSCIENCE.ORG

DEAN OF STUDENTS: MRS. SCHUMACHER
GSCHUMACHER@RIVERCITYSCIENCE.ORG

DEAN OF ACADEMICS: MRS. MODAFF
MMODAFF@RIVERCITYSCIENCE.ORG

PRINCIPAL: MRS. HOUGH
JHOUGH@RIVERCITYSCIENCE.ORG



